



High Pressure Bladder Accumulators - EHV Series

330 bar to 690 bar



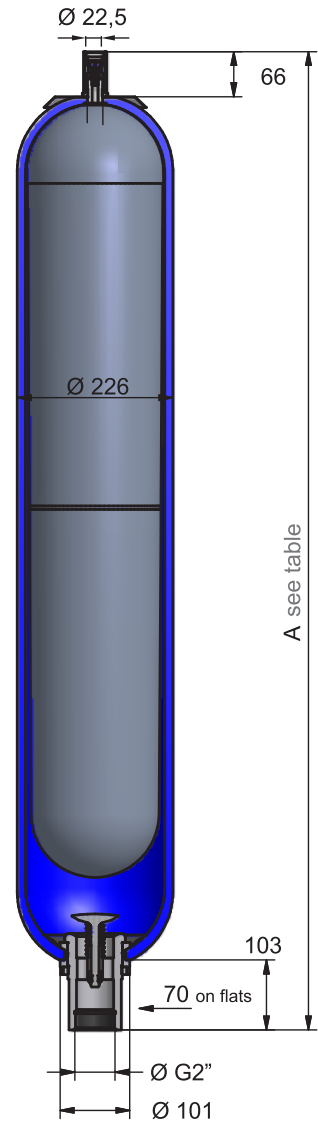
ENGINEERING YOUR SUCCESS.

EHV series 330 bar, 10 to 50 Liters

Standard version (Carbon Steel shell/NBR mix) compatible with mineral oils ².
 According to PED 2014/68/EU, EN 14359, Fluid Group 2 ³.

Max. working pressure: 330 bar	Temperature Range: -20°C to 80°C ¹
Max. flow rate: 900 l/min ⁴	Gas Connection: 7/8" 14 UNF

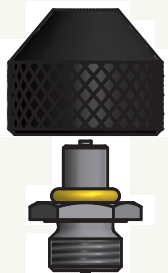
Type Part number	Valve type, (see drawing)	Effective Gas vol. Liters	Weight kg	A max. Height*
EHV 10-330/90-A25GC-200 10837001125	C	9.2	31	587
EHV 10-330/90-A25GB-200 10865401125	B			
EHV 12-330/90-A25GC-200 10867101125	C	11.0	36	687
EHV 12-330/90-A25GB-200 10867401125	B			
EHV 20-330/90-A25GC-200 10837101125	C	17.8	49	897
EHV 20-330/90-A25GB-200 10865501125	B			
EHV 24,5-330/90-A25GC-200 10837201125	C	22.5	56	1032
EHV 24,5-330/90-A25GB-200 10865601125	B			
EHV 32-330/90-A25GC-200 10837301125	C	32	81	1420
EHV 32-330/90-A25GB-200 10865701125	B			
EHV 50-330/90-A25GC-200 11076701125	C	48.5	110	1936
EHV 50-330/90-A25GB-200 11076801125	B			



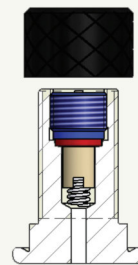
* All dimensions in mm and are subject to manufacturing tolerances
¹ Temperature range can change depending on shell and elastomer material.
 Please see bladder materials and Type (page 35)
² For other fluids: consult Parker | ³ For Fluid group 1 consideration: consult Parker
⁴ Port & fitting size will become limiting factors for flow rate in most applications.

Model of valve stem

B-type
7/8" 14 UNF



C-type
7/8" 14 UNF
(integrated)



EHV series 330 bar, 10 to 50 Liters / Spare Parts & Accessories

Type Part Number	Adaptor* Threaded Part number	Clamps Model (quantity) Part number	Support Bracket Model Part number	Mounting Frame Model Part number	Lifting Eye Part number	Complete Repair Kit Model Part Number
EHV 10-330/90-A25GC-200 10837001125	G 1" cyl 04557000223	D226 2 20251503648	CE159A 20109003620	EF2 20217600125	10912700200	KIT EHV 10-330 DIA22 VALVE C 19028900225
EHV 10-330/90-A25GB-200 10865401125						KIT EHV 10-330 DIA22 VALVE B 19035800225
EHV 12-330/90-A25GC-200 10867101125	G 1" cyl 04557000223	D226 2 20251503648	CE159A 20109003620	EF2 20217600125	10912700200	KIT EHV 12-330 DIA22 VALVE C 19032100225
EHV 12-330/90-A25GB-200 10867401125						KIT EHV 12-330 DIA22 VALVE B 19035900225
EHV 20-330/90-A25GC-200 10837101125	G 1" cyl 04557000223	D226 2 20251503648	CE159A 20109003620	EF2 20217600125	10912700200	KIT EHV 20-330 DIA22 VALVE C 19029000225
EHV 20-330/90-A25GB-200 10865501125						KIT EHV 20-330 DIA22 VALVE B 19036000225
EHV 24,5-330/90-A25GC-200 10837201125	G 1" cyl 04557000223	D226 2 20251503648	CE159A 20109003620	EF2 20217600125	10912700200	KIT EHV 24,5-330 DIA22 VALVE C 19029400225
EHV 24,5-330/90-A25GB-200 10865601125						KIT EHV 24,5-330 DIA22 VALVE B 19036300225
EHV 32-330/90-A25GC-200 10837301125	G 1" cyl 04557000223	D226 2 20251503648	CE159A 20109003620	EF3 20217700125	10912700200	KIT EHV 32-330 DIA22 VALVE C 19029100225
EHV 32-330/90-A25GB-200 10865701125						KIT EHV 32-330 DIA22 VALVE B 19036100225
EHV 50-330/90-A25GC-200 11076701125	G 1" cyl 04557000223	D226 2 20251503648	CE159A 20109003620	EF3 20217700125	10912700200	KIT EHV 50-330 DIA22 VALVE C 19054100225
EHV 50-330/90-A25GB-200 11076801125						KIT EHV 50-330 DIA22 VALVE B 19054200225

*For more adaptor options see page 32